

6) Simplify 18/102.

- A. 6/34
B. 9/51
C. 2/51
D. 3/17
E. 3/51

$$\frac{18}{102} = \frac{2 \cdot 9}{2 \cdot 51} = \frac{\cancel{2} \cdot 3 \cdot 3}{\cancel{2} \cdot 3 \cdot 17} = \frac{3}{17}$$

$$\frac{18}{102} = \frac{2 \times 9}{2 \times 51} = \frac{\cancel{2} \times 3 \times 3}{\cancel{2} \times 3 \times 17} = \frac{3}{17}$$

7) At the end of the night, a pizza place had $\frac{1}{2}$ pizzas left over. The 4 employees each took home the same amount of leftover pizza. How much pizza did each employee take home? Simplify your answer.

- A. $\frac{1}{8}$
B. 2
C. $\frac{1}{16}$
D. $\frac{1}{12}$
E. $1 \frac{1}{16}$

$$\frac{1}{2} \div 4 = \frac{1}{2} \times \frac{1}{4} = \frac{1}{2 \times 4} = \frac{1}{8}$$

$$\frac{1}{2} \div 4 = \frac{1}{2} \times \frac{1}{4} = \frac{1}{2 \times 4} = \frac{1}{8}$$

8) What is 4% of 1,100?

- A. 4,400
B. 222.222...
C. 44
D. 22.222...
E. 4.4

$$4\% = .04$$

$$\% \text{ of} = \times .04$$

$$1,100 \times .04 = 44.00$$

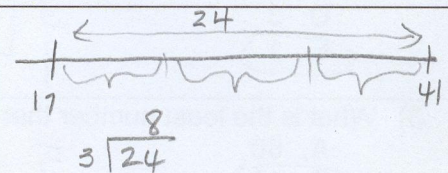
9) What 2 numbers should be placed in the blanks below so that the difference between consecutive numbers is the same?

17, _____, _____, 41

- A. 23, 29
B. 24, 34
C. 25, 33
D. 26, 35
E. 27, 31

$$\begin{array}{r} +9 \quad 26 \quad +9 \quad 35 \\ +8 \quad 25 \quad +8 \quad 33 \end{array}$$

$$\begin{array}{r} 41 \\ -17 \\ \hline 24 \end{array}$$



$$\begin{array}{l} 17 + 8 = 25 \\ 25 + 8 = 33 \\ \checkmark 33 + 8 = 41! \end{array}$$

10) A shirt originally cost \$20, but during a sale its price was reduced by 15%. What is the current price of the shirt?

- A. \$3
B. \$5
C. \$13
D. \$17
E. \$23

$$\begin{array}{r} \$20 \text{ reduced by } 15\% \text{ of } \$20 \\ \downarrow \quad \downarrow \\ 20 \quad - \quad .15(20) = 20 - 3 \\ \hline 17 \end{array}$$

11) The original price of a banana in a store is \$2. During a sale, the store reduces the price by 25% and Joe buys the banana. Joe then meets his friend, Sam, who is almost faint with hunger. Seeing an opportunity, Joe raises the price of the banana 10% from the price at which he bought it, and sells it to Sam. How much does Sam pay?

- A. \$1.50
B. \$1.65
C. \$1.65
D. \$1.75
E. \$2.00

$$J = 2 - .25(2) = 1.5$$

$$S = 1.5 + .10(1.5) = 1.7$$